



National Reference Centre for Parasitology
Centre National de Référence en Parasitologie

J.D. MacLean Centre for Tropical Disease of McGill University
Centre des Maladies Tropicales J.D. MacLean de l'Université McGill



With the collaboration of Quebec Public Health Laboratory,
Institute of Parasitology, McGill University,
Research Institute of the McGill University Health Centre,
Public Health Agency of Canada, Health Canada.

Avec la collaboration du Laboratoire de Santé Publique du Québec,
Institut de Parasitologie, Université McGill,
Institut de Recherche du Centre Universitaire de Santé McGill,
Agence de la Santé Publique du Canada, Santé Canada.

A. INSTRUCTIONS FOR GROWTH MEDIUM

1. Store flasks containing 4 mL of *Leishmania* growth medium at 4°C until use.
2. On day of scraping/biopsy sampling, bring flask to room temperature before adding specimen. Perform all manipulation with the medium in a sterile environment using aseptic techniques.

B. SAMPLING INSTRUCTIONS FOR LESION ASPIRATE, SCRAPING & BIOPSY

TYPE OF SPECIMEN	MATERIALS REQUIRED	PROCEDURE
Lesion aspirate	<ol style="list-style-type: none">1. Sterile gloves2. Alcohol pads3. 25-27 gauge needle4. 1-3 cc syringe5. Sterile normal saline6. Sterile gauze pads7. Band-aid/tape8. <i>Leishmania</i> growth medium9. Patient identification label10. Parafilm	<ol style="list-style-type: none">1. Clean skin lesion with alcohol pad and allow to air dry.2. Draw 0.1 to 0.2 mL sterile normal saline into syringe and insert needle tangentially into ulcer base.3. Rotate needle back and forth. Gently and slowly aspirate tissue fluids (should be pink tinged).4. Transfer fluid to <i>Leishmania</i> growth medium.5. Identify the flask with patient name/number on the designated writing space of the flask (on the small surface sides). Do not affix any label on both viewing spaces of the flask (large surface sides).6. Tightly wrap the flask cover with parafilm.7. Follow instructions on shipping.
Lesion scraping	<ol style="list-style-type: none">1. Sterile gloves2. Alcohol pads3. 1-2% lidocaine with epinephrine (or suitable local anesthetic)4. #15 sterile scalpel5. Sterile gauze pads6. Band-aid/tape7. <i>Leishmania</i> growth medium8. Patient identification label9. Parafilm	<ol style="list-style-type: none">1. Clean skin lesion with alcohol pad and allow to air dry.2. Anesthetize lesion superficially with lidocaine and wait 5 minutes.3. Horizontally and superficially scrape the lesion/ulcer base with the scalpel. The scraping must be done lightly, enough to elicit an exudate but not enough to cause bleeding.4. Dress the lesion appropriately.5. Transfer the scrapings to the <i>Leishmania</i> growth medium.6. Identify the flask with patient name/number on the designated writing space of the flask (on the small surface sides). Do not affix any label on both viewing spaces of the flask (large surface sides).7. Tightly wrap the flask cover with parafilm.8. Follow instructions on shipping.



National Reference Centre for Parasitology

Centre National de Référence en Parasitologie

J.D. MacLean Centre for Tropical Disease of McGill University
Centre des Maladies Tropicales J.D. MacLean de l'Université McGill



With the collaboration of Quebec Public Health Laboratory,
Institute of Parasitology, McGill University,
Research Institute of the McGill University Health Centre,
Public Health Agency of Canada, Health Canada.

Avec la collaboration du Laboratoire de Santé Publique du Québec,
Institut de Parasitologie, Université McGill,
Institut de Recherche du Centre Universitaire de Santé McGill,
Agence de la Santé Publique du Canada, Santé Canada.

Biopsy	<ol style="list-style-type: none">1. Sterile gloves2. Alcohol pads3. 4 mm sterile disposable punch or sterile scalpel (#15, #11, or #10)4. Suture materials5. Sterile gauze pads6. Band-aid/tape7. <i>Leishmania</i> growth medium8. Patient identification label9. Parafilm	<ol style="list-style-type: none">1. Clean the area of lesion with alcohol pads and allow to air dry.2. Anesthetize lesion superficially with lidocaine and wait 5 minutes.3. From the edge of the lesion, remove a piece of tissue approximately 3 to 4 mm in circumference and approximately 1 mm deep (as described in the photo).4. Close and dress the wound appropriately.5. Transfer the biopsy to the <i>Leishmania</i> growth medium.6. Identify the flask with patient name/number on the designated writing space of the flask (on the small surface sides). Do not affix any label on both viewing spaces of the flask (large surface sides).7. Tightly wrap the flask cover with parafilm.8. Follow instructions on shipping.
--------	--	--

Please note:

- ❖ Biopsy has a low culture yield for leishmaniasis; lesion scrapings are preferable.
- ❖ Lesions on the face, anterior of the neck, and near larger vessels or nerves should be removed with extreme caution. A simple scraping (as described above) on these areas is sufficient.

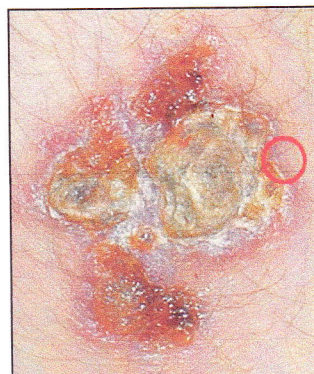
C. SHIPPING INSTRUCTIONS

1. Place the flask in an upright position in the box.
2. Fill out the NRCP requisition form in the appropriate fields and include it in the shipment.
3. Do NOT add ice, ice pack, or dry ice. The specimen MUST be sent at room temperature.
4. Place labels entitled "**Keep at Room Temperature**" and "**Keep Upright**" on the shipment box.
5. Please call before shipping specimen at +1 (514) 934-8347.

D. SHIPPING ADDRESS

Research Institute of the MUHC
National Reference Centre for Parasitology
Dr. Momar Ndao
1001 Blvd. Decarie, E03.5375
Montreal, Quebec
H4A 3J1
Canada

Tel. & fax: +1 (514) 934-8347



Biopsy should be removed from the edge of the most affected tissue and should have relatively intact tissue adjacent to the lesion for at least one half of the biopsy.